

GPS RWY 35

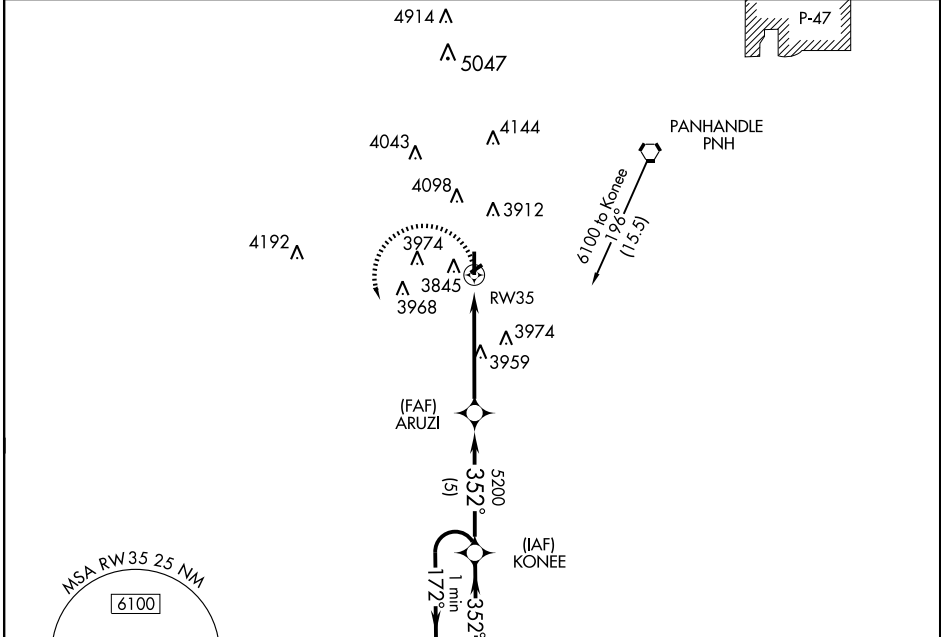
AMARILLO/TRADEWIND (TDW)

APP CRS 352°	Rwy ldg TDZE Apt Elev	4800 3642 3648
------------------------	-----------------------------	---

▼ Use Rick Husband Amarillo Intl altimeter setting.
▲ NA

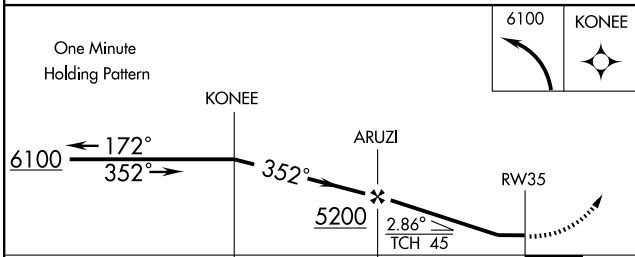
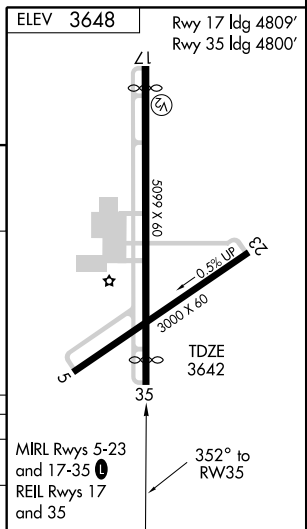
MISSED APPROACH: Climbing left turn to 6100 direct KONEE WP and hold.

AMARILLO APP CON * 119.5 307.0	CLNC DEL 125.4	UNICOM 122.8 (CTAF) 0
--	--------------------------	---------------------------------



SC-2, 23 NOV 2006 to 21 DEC 2006

SC-2, 23 NOV 2006 to 21 DEC 2006



CATEGORY	A	B	C	D
S-35	4300-1	658 (700-1)	4300-1¾ 658 (700-1¾)	4300-2 658 (700-2)
CIRCLING	4300-1	652 (700-1)	4300-1¾ 652 (700-1¾)	4480-2¾ 832 (900-2¾)