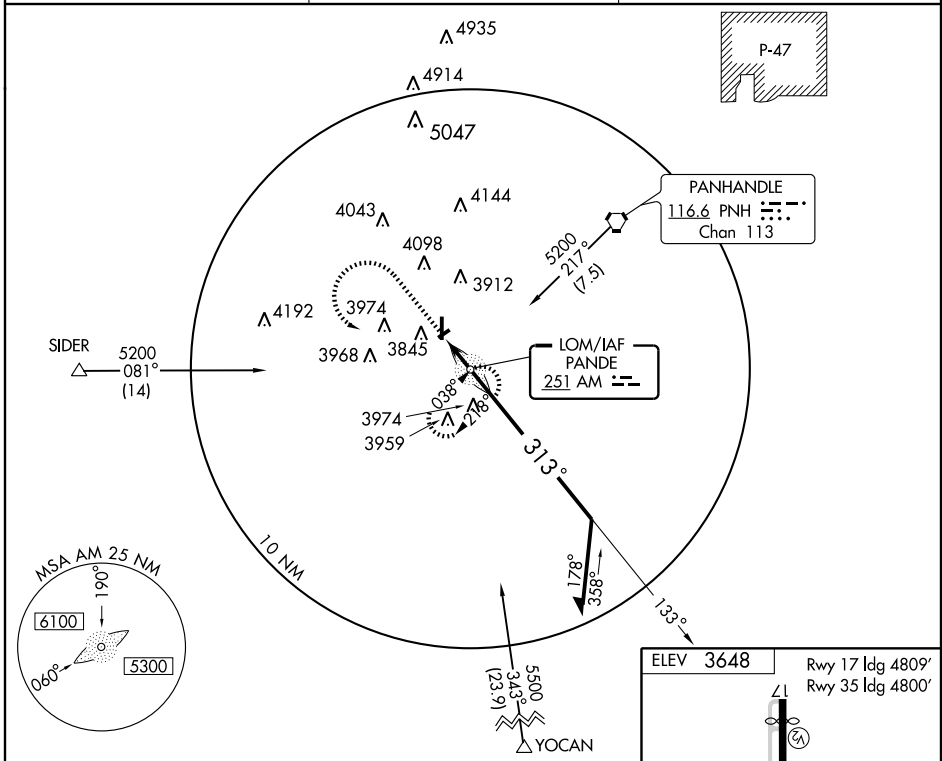


NDB AM 251	APP CRS 313°	Rwy ldg TDZE Apt Elev	N/A N/A 3648
----------------------	------------------------	--------------------------	---

▼ Use Rick Husband Amarillo Intl altimeter setting.
 ▲ NA

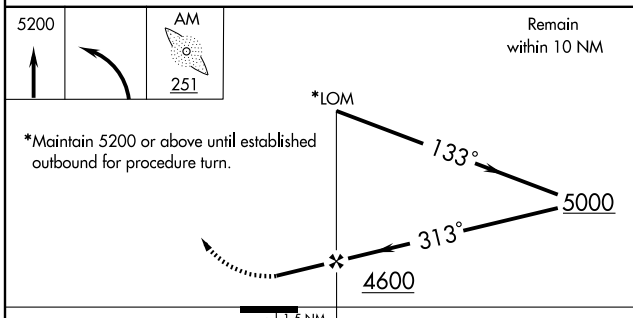
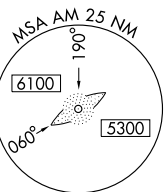
MISSED APPROACH: Climb to 5200, then left turn direct AM LOM and hold.

AMARILLO APP CON * 119.5 307.0	CLNC DEL 125.4	UNICOM 122.8 (CTAF) 0
--	--------------------------	--

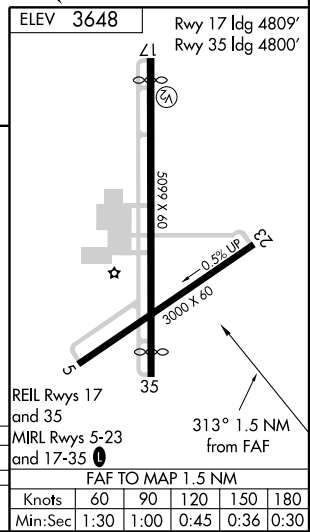


SC-2, 23 NOV 2006 to 21 DEC 2006

SC-2, 23 NOV 2006 to 21 DEC 2006



*Maintain 5200 or above until established outbound for procedure turn.



CATEGORY	A	B	C	D
CIRCLING	4220-1 572 (600-1)	4260-1 612 (700-1)	4260-1 ¾ 612 (700-1 ¾)	4480-2 ¾ 832 (900-2 ¾)
FAF TO MAP 1.5 NM				
Knots	60	90	120	150 180
Min:Sec	1:30	1:00	0:45	0:36 0:30